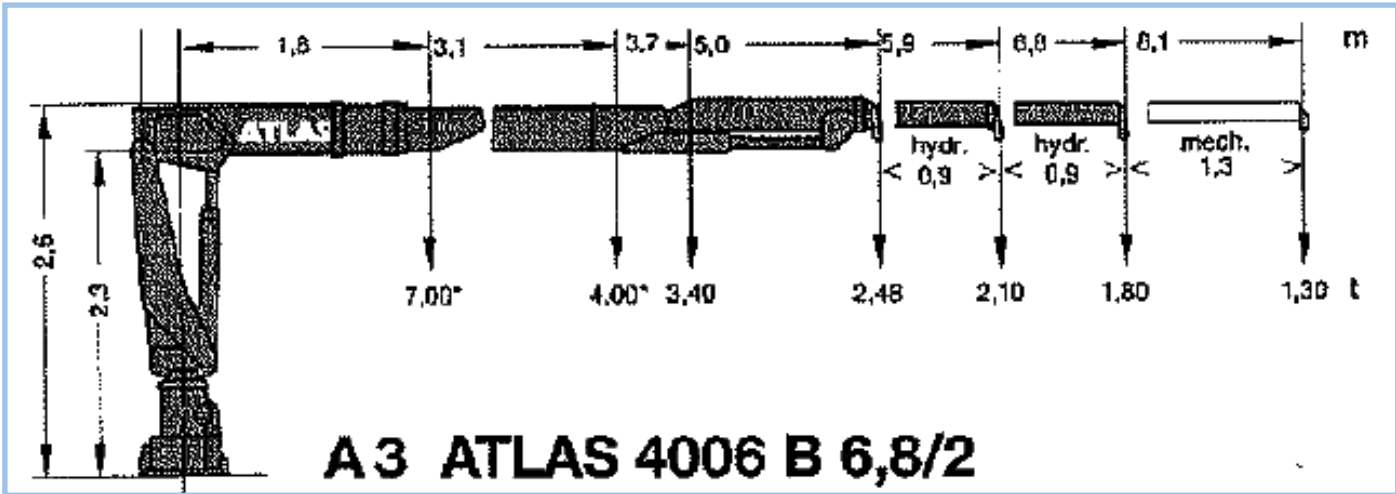




# Mounted Crane

Our bolt-on crane unit can be mounted onto our NATO modular steel pontoon system to facilitate heavy lifting and piling operations. Along with the pontoon systems it can be easily transported by road and transferred to the water, and has its own power supply.



## Specification

|                   |                       |
|-------------------|-----------------------|
| Model             | A3 Atlas 4006 B 6,8/2 |
| Unladen weight    | 1.6 tonnes            |
| Carrying capacity | 1.8 tonnes            |
| Max reach         | 6.8m                  |

